



# SOLOSCAN P50

## Ultrasound Scanner POWERED BY *Yaukey*

The Soloscan P50 Ultrasound Scanner offers advanced technology and a wide range of clinical applications in a lightweight, portable, and handheld design. The P50 is designed for the most demanding healthcare environments and features built-in WiFi and USB connection, enabling external display operation with computers, tablets, and smartphones. With the P50, ultrasounds can be done anytime, anywhere.



**160 G**

Light Weight

**4 HR**

Battery Life

**6**

Probe Types

**10 X**

Max Zoom In

# Features

---

- High-Definition Ultrasound Images
- Lightweight, Ergonomic Handheld Design
- WiFi & USB Connection (Android/iOS/Windows Support)
- Detachable Probe Technology (Swap and connect different probes to the main device in seconds)
- 4 Hour Continuous Battery life
- Multiple Language Support
- Up to 10x Max Zoom
- Patient Information Management (DICOM 3.0 Support)

**Modes:** B, BM, 2B, THI, Color, Power, Pw

**Size:** 150mm\*40mm\*25mm

**Weight:** 160g (.35 lbs)

# Dual Use Probe

---

Specially customized to scan both the abdomen and heart, the **Convex & Cardiac Probe** can be used for both routine abdominal exams and cardiac exams.



**Model:** C5-2Fs  
**Frequency:** 3.5 MHZ  
**Bandwidth:** 2-5 MHZ  
**Radius/ Footprint:** R50



## Probe Types



Transvaginal



Convex



Linear



Small Linear



Micro-Convex

## Specifications

### Transvaginal Application:

Obstetrics/ Gynecology, Urology, IVF, and Pelvic

**Model:** E10-4Ks

**Frequency:** 6.5 MHZ

**Bandwidth:** 5-8.5 MHZ

**Radius/ Footprint:** R10

### Convex Application:

Abdomen, OB/GYN, Urology, and Lung

**Model:** C5-2Ks

**Frequency:** 3.5 MHZ

**Bandwidth:** 2.5-5 MHZ

**Radius/ Footprint:** R60

### Linear Application:

Vascular, Small Parts, Breast, MSK, Nerve, and Anesthesia

**Model:** L11-4Ks

**Frequency:** 7.5 MHZ

**Bandwidth:** 6-11 MHZ

**Radius/ Footprint:** L40

### Small Linear Application:

Nerve, Anesthesia, Vascular, Small Parts, Breast, and MSK

**Model:** L11-4Gs

**Frequency:** 8 MHZ

**Bandwidth:** 6-11 MHZ

**Radius/ Footprint:** L25

### Micro-Convex Application:

Neonatal Abdominal, Small Parts, and Neonatal Cardiac

**Model:** C8-5Ks

**Frequency:** 6.5 MHZ

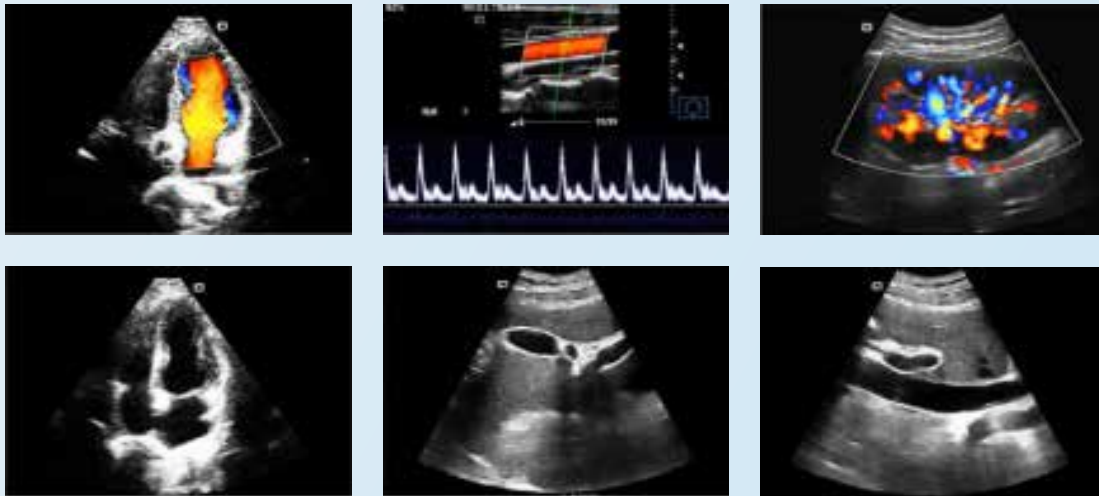
**Bandwidth:** 5-8 MHZ

**Radius/ Footprint:** R15

# Wireless Ultrasound

## WiFi & USB Connection

Supported on IOS, Android, and Windows  
Capture ultrasounds anytime, anywhere



## Clinical Applications



ICU



Primary Care



EMS



Anesthesia



Tele-Medicine



Research



Teaching



OBGYN



Sports Medicine



Field Medicine