



ACCESSORIES TO SUPPORT
YOUR RESCUE

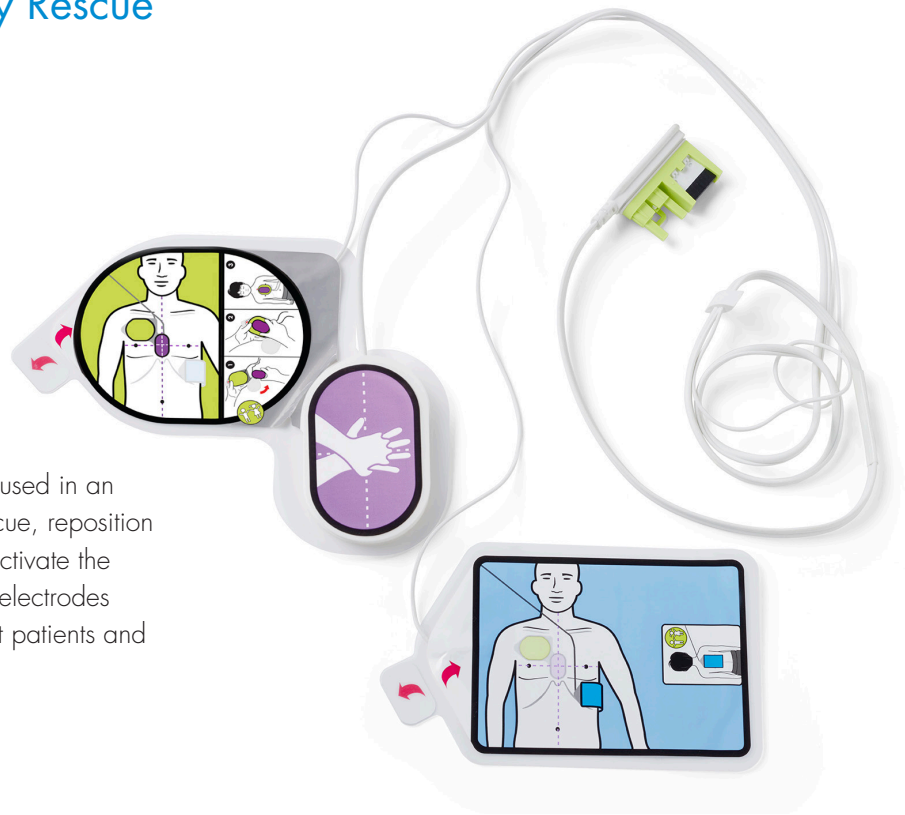
CONSUMABLE RESCUE ACCESSORIES

Long-lasting for Every Rescue

CPR Uni-padz® electrodes

Truly universal, these pads can be used in an adult or child rescue. For child rescue, reposition the CPR Uni-padz as shown and activate the child rescue mode. CPR Uni-padz electrodes provide full CPR feedback for adult patients and have a five-year installed shelf life.

Part # 8900-000280-01



Every set of CPR Uni-padz electrodes comes with a Rescue Accessory Kit that includes scissors for cutting clothing to expose the victim's chest, a breathing mask for rescuer protection, a paper towel to ensure dry contact with electrodes, and a razor for removing hair.

Smart Battery

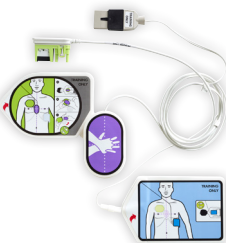
The ZOLL AED 3® defibrillator uses a smart battery that can report its power level status on the device's LCD screen or transmit it automatically over WiFi to your AED program management solution. In stand-by mode, the ZOLL AED 3 disposable lithium manganese dioxide battery has an installed life of up to five years.

Part # 8000-000696



ZOLL AED 3 CLINICAL UNIT TRAINING ACCESSORIES

Tools to Simulate Every Scenario



Training/Demonstration CPR Uni-padz Electrodes

Connects to a ZOLL AED 3 defibrillator for training and simulations. Includes one set of two reusable training pads.

Part # 8900-000284



ZOLL® AED Simulator

Generate either shockable or non-shockable heart rhythms for various rescue scenarios. Simulator uses a 9-volt battery, included with purchase.

Part # 8000-000925



CPR Uni-padz Training Replacement Pads

Eight sets of two reusable training pads for use in simulation and training.

Part # 8900-000285



CPR Uni-padz Travel Trainer

One-piece, compact, easy-to-carry demonstration tool simulates shockable and non-shockable heart rhythms.

Part # 8008-000053-01



Demo Manikin

Adult manikin for AED/CPR training simulates a victim of 130 pounds (60 kg). Removable head for compact storage and hands-only training.

Part # 8000-0835-01



Training Power Adapter

Operate the clinical ZOLL AED 3 device in a training scenario without compromising battery level and performance. This plug-in A/C power source gives clinicians access to complete functionality except defibrillation therapy.

Part # 8000-002008

ZOLL ResQSystem™ Cabinet

One Location. Many ways to help.

Part # 8911-005050

Spacious, centrally located cabinet for AEDs and trauma kits

- Quick and easy access
- AED and medical-supply graphic indicators on front and sides
- Charging port for Mobilize™ Comprehensive trauma kit ensures device is charged
- Suitable for all types of organizations



Semirecessed Wall Cabinet

Part # 8000-001257

Meets ADA (Americans with Disabilities Act) requirements.

Dimensions: 14" x 14" x 3.5"



Fully Recessed Wall Cabinet

Part # 8000-001258

Meets ADA (Americans with Disabilities Act) requirements.

Dimensions: 14" x 14" x 1.5"



9-inch Standard Wall Cabinet

Part # 8000-0855

Dimensions: 17.5" x 17.5" x 9"



7-inch Standard Wall Cabinet

Part # 8000-001256.

Dimensions: 17.5" x 17.5" x 7"



Strobe for Standard Surface-mounted Wall Cabinet

Part # 8000-001259



Strobe for Recessed Wall Cabinet

Part # 8000-001267

AED SIGNAGE

Create High Visibility

AED Sign Package

3D wall sign and 8.5" x 11" wall-mounted sign to improve AED visibility

Part# 8000-0825



WALL MOUNTS

Simple and Universal

The universal wall mount holds the ZOLL AED 3 defibrillator alone or in its carry case. It includes mounting hardware, consumable tracking card, wall-mount template, and installation instructions.



Wall Mount Bracket for ZOLL AED 3
(without carry bag)

Part# 8000-001255



Wall Mount Bracket for ZOLL AED 3
with carry case and backup CPR

Uni-padz electrodes (in carry case)

Part# 8000-001266

CARRY CASES

Rugged and Portable

Choose from four different portable storage options to safely carry the ZOLL AED 3 defibrillator: the standard carry case, the small hard-shell carry case, the large hard-shell carry case, or the rescue backpack. The hard-shell cases are waterproof, with an ingress protection (IP) rating of IP68 for dust and water.

Standard Carry Case

In addition to the ZOLL AED 3 defibrillator with pre-connected CPR Uni-padz electrodes, the standard carry case can also hold a backup set of CPR Uni-padz.

Part# 8000-001250



Replacement Shoulder Strap for ZOLL AED 3 Carry Case

Part# 8000-001252



Large Hard-shell Carry Case

Protect and carry everything needed for a vigorous rescue with the large hard-shell carry case, including a backup set of CPR Uni-padz electrodes and a backup battery.

Part# 8000-001254



Small Hard-shell Carry Case

For lightweight maximum protection, choose the small hard-shell carry case. It accommodates the ZOLL AED 3 defibrillator and one spare battery.

Part# 8000-001253



AED Rescue Backpack

Rescue backpack for ZOLL AEDs features outer pouch that holds the ZOLL AED 3 or AED Plus® defibrillators. Main compartment features three removable, stick-in-place pouches.

Part# 8000-001468-01



Battery Case

Store the ZOLL AED 3 battery in this convenient pouch for easy identification and access when needed. Battery case stores easily in both the large and small hard-shell carry cases.

Part# 8000-001251



Soft Carry Case

The ZOLL AED 3 soft carry case will hold your ZOLL AED 3 device, pre-connected electrode, and include a pouch for spare electrodes or rescue accessories.

Part# 8000-001280

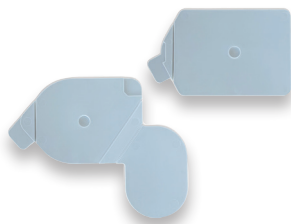
ZOLL AED 3 TRAINER AND ACCESSORIES

Simulate a Rescue with Real CPR Help

The ZOLL AED 3 Trainer is the only automated external defibrillator (AED) training solution that uses Real CPR Help® to provide real-time feedback on a trainee's compression quality.

- Trainees learn the proper rate and depth of CPR chest compressions.
- An active LCD screen with full-color rescue images mirrors what a student will see on a clinical ZOLL AED 3 device.
- Trainer device is configurable for semi-automatic or fully automatic operation.
- An on-device pause button allows the instructor to pause a training scenario.
- Configurable for semi-automatic or fully automatic operation
- Trainer device ships with training harness, training electrode gels/liner, batteries, and Operator's Guide.

Part # 8028-000001-01



Replacement CPR Uni-padz Electrode Liners

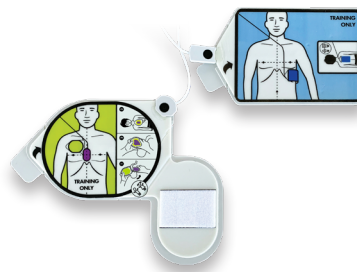
Part # 8028-000013



CPR Uni-padz Electrode Training Harness

For use with ZOLL AED 3 Trainer.

Part # 8028-000010



Replacement Adhesive Gels for CPR Uni-padz Electrodes

Gel must be applied to the reusable pad before use.

Part # 8028-000014 (Case of 5)



ACCESSORIES AND SERVICES AT YOUR FINGERTIPS

Want to know more about ZOLL AED 3 accessories and services?

Contact your local authorized ZOLL distributor or visit ZOLL at [ZOLL.com/aed3](https://www.zoll.com/aed3)

Authorized ZOLL distributors can help you with your complete AED program, including:

- Program management and maintenance
- Compliance with local regulations and registries
- Training for your volunteer responders
- Replenishment of accessories
- Adding more AEDs to your program

ZOLL MEDICAL CORPORATION

269 Mill Road | Chelmsford, MA 01824 | 978-421-9655 | 800-804-4356 | [zoll.com](https://www.zoll.com)

Copyright © 2024 ZOLL Medical Corporation. All rights reserved. AED Plus, Mobilize, Real CPR Help, ResQSystem, Uni-padz, ZOLL, and ZOLL AED 3 are trademarks or registered trademarks of ZOLL Medical Corporation in the United States and/or other countries. All other trademarks are the property of their respective owners.

Printed in U.S.A.
MCN PP 2312 0749

For subsidiary addresses and fax numbers, as well as other global locations, please go to [zoll.com/contacts](https://www.zoll.com/contacts).

ZOLL®